

## Appendix A – Infrastructure Update (Connectivity)

# The LEPs role in unlocking infrastructure

**NEWANGLIA**  
Local Enterprise Partnership  
for Norfolk and Suffolk



## **LEADERSHIP**

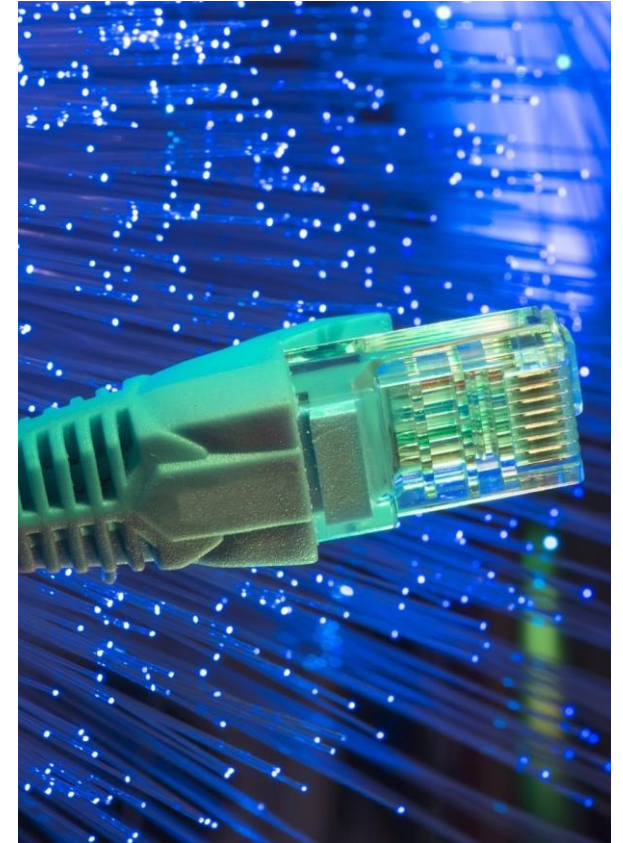
Identify schemes and  
economic benefit

## **INFLUENCE**

Providers and funders

## **FUNDING**

Growth Deal



# Delivering the Norfolk & Suffolk Economic Strategy

- **Make sure that investment markets have the information they need** to take the decision to invest in infrastructure.
- **Build the right kind of housing and commercial space where it is needed** and integrate infrastructure to build the communities and places people want to live.
  - *Growth in PRIORITY PLACES supported by infrastructure*
- **Prioritise digital and physical infrastructure projects** to support businesses to develop and provide the space that new and existing firms need to grow.
- **Commit to further supporting businesses through a smoother planning system**, linking housing and infrastructure provision with flexible investment plans, working with Homes England and the Housing Finance Institute.
- **At a regional level, continue to work with other areas, on major physical and digital infrastructure improvements**, and proactively identify opportunities to create bigger gains across the East.



**Infrastructure improvements underpin  
all our priority places and themes**

***Enabling productivity gains and clean growth through the delivery of integrated infrastructure to create places that people want to live and work.***

*Consider the impact of climate change for the most vulnerable infrastructure.*

## **Transport**

- Freight and logistics connectivity: Felixstowe to Nuneaton/North and A14
- London and Cambridge links with recent investments
- Roads Investment Strategy/Transport East asks
- The electrification of transport, including freight
- Modal shift, active travel and sustainable integration

## **Digital connectivity**

- Better Broadband programmes and take up
- Full fibre by 2025

## **Energy**

- Electrification of transport, heat and digital society
- Grid/substation constraints
- BEIS supported Greater South East Energy Hub
- Innovative local and sustainable energy solutions
- The decarbonisation of heat, Bacton gas terminal and hydrogen introduction
- Reduce demand

## **Water**

- Managing resources – Water Resources East



# Summary of achievements to date



**Growth Deal Programme profile:**  
**£83m in connectivity**  
**£68m in unlocking growth**  
**£280.05m public/private leverage**  
**41,640 new/safeguarded jobs**  
**6,300 new homes**



Projects which are complete include :

- Broadland Northway
- Beccles Southern Relief Road
- Lynn Sport Access Road
- Bury Relief Road and sustainable transport package
- Felbrigg roundabout
- Norfolk broadband programme

## Large Local Majors

- Ipswich Northern Route
- Norwich Western Link

## Major Road Network

- A10 West Winch
- A12 East of Ipswich
- A12 Woodbridge
- A17 Pullover
- A140 Earl Stonham
- A140 Long Stratton
- A146 Barnby Bends

## Environmental Sustainability: carbon inquiry



## Transport Strategy

1. Global gateways
2. Multi-centred growth
3. Energised coastal communities

## Other STBs:

- England's Economic Heartland (Ox-Cam arc): Well-established growth story aligned with accessibility, inclusion and quality of life. Projects of significance: East West Rail and freight study
- Midlands Connect (Midlands): Place and delivery focus. Significant project: Ely
- Transport for the South East (South of London): Focussed on integrated and sustainable strategic connectivity as well as quality of life
- Transport for the North (North): Only STB with statutory status



# New Anglia Transport Board

**NEWANGLIA**  
Local Enterprise Partnership  
for Norfolk and Suffolk



## Integrated Transport Strategy:



Our Offer to the World / Competitive  
Clusters close to Global Markets

### CONNECTING THE EAST, ACCESSING THE WORLD

Quicker, more reliable and resilient strategic connections to boost our contribution to UK plc, encouraging improved perceptions, economic participation and inward investment for our key sectors and competitive clusters.



Driving Business Growth  
and Productivity

### AGILE TO CHANGE

Embracing new technologies and digital connectivity to enable remote access to services and opportunities to facilitate Mobility as a Service (MaaS).

### REGIONAL CONNECTIVITY AND OUR PRIORITY PLACES

Keeping people and products moving in and around our growing Priority Places and Enterprise Zones through new investment, placemaking, maintenance and an integrated public transport network with opportunities for walking and cycling.



Driving Inclusion and Skills

### LOCAL AND COASTAL

Innovative on-demand transport solutions and improvements to facilitate local sustainable growth, walking and cycling, recognising local distinctiveness, and offering access to services and opportunities through digital means.



Collaborating to Grow

### MAKING IT HAPPEN

An accompanying Delivery Plan for Norfolk and Suffolk to help gain the momentum needed to unlock and deliver, through innovative means, the key strategic interventions identified by new and existing partners.

# A14: Britain's Premier Trade Route

The multi-partner 'No More A14 Delays in Suffolk' campaign, led by the Suffolk Chamber of Commerce is working to secure improvements to the A14.

Suffolk Growth Programme Board has supported the campaign by commissioning an EIA of the A14 road and adjacent rail corridor.

Improvements to seven junctions are being sought as part of Highways England's second Road Investment Strategy (RIS2): 3x Ipswich, 2x Bury St Edmunds and 2x Newmarket; maintenance between Haughley and Woolpit and Copdock and Orwell Bridge; Feasibility study between Cambridge and Felixstowe to consider the impact of growth in Suffolk and across the country.

Copdock junction has recently received funding for improvements to support port resilience.

A Westminster business reception was held earlier in the year to boost support.





# A47: Investing in East-West Success



The A47 Alliance, led by Norfolk County Council, has already been successful in securing a number of improvements to the A47 as part of Highways England's first Roads Investment Strategy (RIS1): Blofield and North Burlingham and North Tuddenham and Easton dualling; Thickthorn and Great Yarmouth junction improvements; safety measures on the Acle Straight (now complete). There is further growing concern about the ability of Highways England to deliver these schemes by the target dates in the early 2020s.

Two further schemes in Norfolk are currently being promoted for RIS2 investment: Acle Straight and Tilney to East Winch dualling. In the longer term the A47 Alliance including Norfolk Chamber of Commerce, is campaigning for full dualling of the A47.

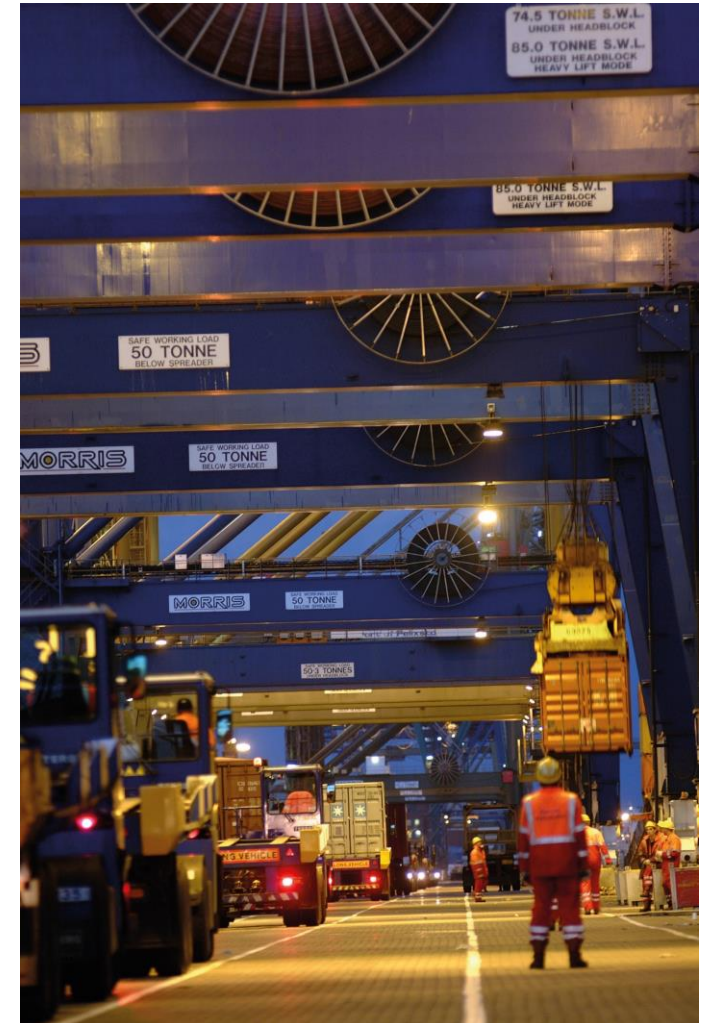
A Westminster business reception has been held this year to garner additional support.

# Ports and their connectivity

The area's ports including Felixstowe, Ipswich, Great Yarmouth, Lowestoft and King's Lynn are a huge economic asset to the region and beyond.

New Crossings are being progressed in Great Yarmouth and Lowestoft with each having received funding from Growth Deal and DfT:

- Great Yarmouth: the project remains on track with the public examination beginning on 24 September. BAM Nuttall and Farrans Construction have been appointed to develop and construct the bridge. Main works are due to start in late 2020 with completion expected by early 2023, subject to planning approval. Local contributions are currently being pursued to support the delivery of the project.
- Lowestoft: a planning decision is expected in late 2019. Suffolk County Council is currently going through a tender process for construction. Construction is programmed to begin in late 2019/early 2020 and is scheduled to complete in 2022. Local contributions are currently being pursued to support the delivery of the project.



# Transforming Cities and Future Mobility Zones



## Transforming Cities:

Help support new growth, improve social mobility, reduce congestion and promote modal shift/greener travel. The bid offers quicker connectivity to employment and learning opportunities from a number of new and deprived communities.

The bid will transform the bus network and city centre through delivering better interchanges/ public realm and improve customer experience with technology and improved ticketing. Three scenarios being pursued range from £75m to £162m

Bid supports ambitions of Integrated Transport Strategy and Growth Deal investment to date.

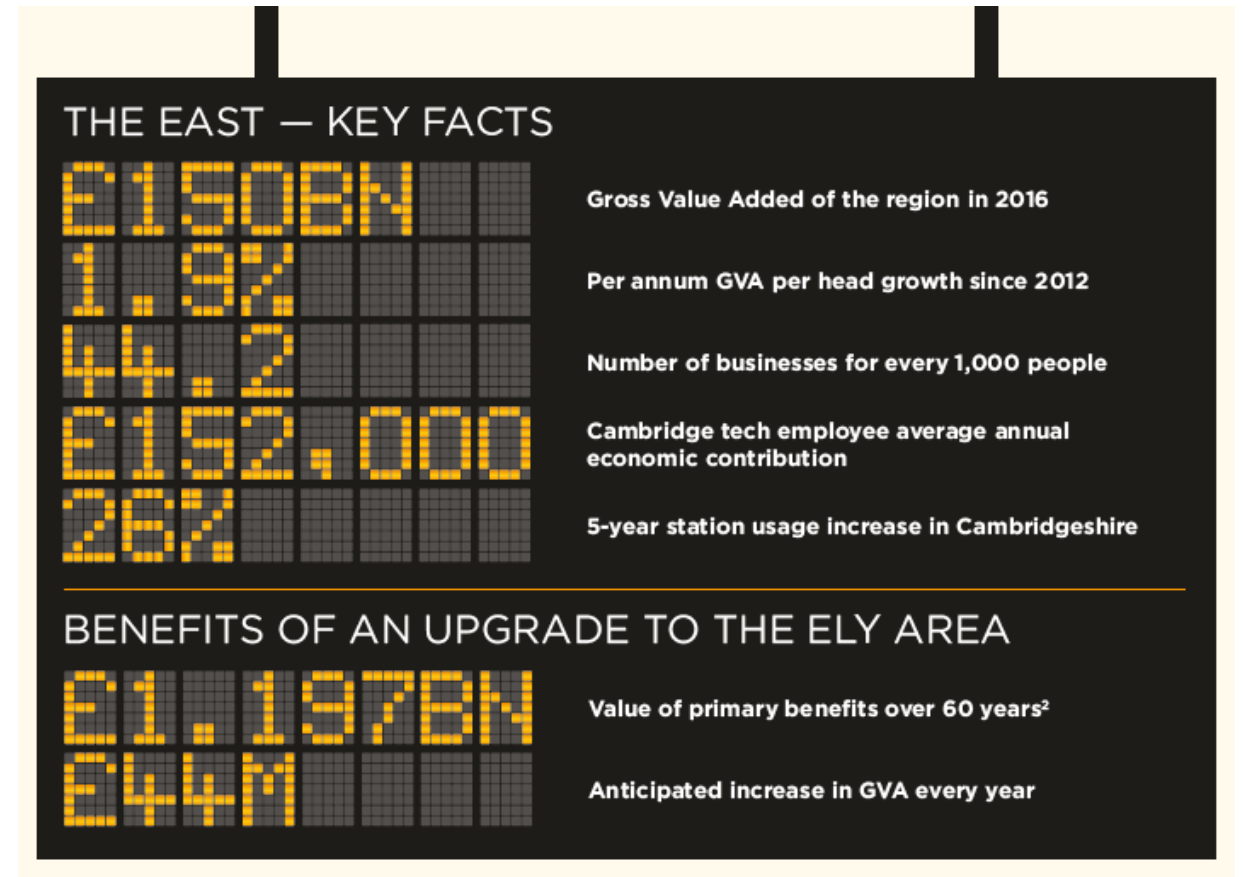
## Future Mobility Zone – bid includes:

- Using real-time and big data to boost shared mobility and modal shift
- Driving behaviour change by offering personal journey planning, incentives and integrated ticketing
- Reducing emissions through electrification for passenger and freight journeys



# Ely area road and rail improvements

- Ely Taskforce, led by Cambridgeshire County Council
- Scheme will allow for increased passenger services as well as freight capacity on the network.
- In March 2017 the Board agreed to fund the advancement of the Ely area improvement scheme by £3.3m as part of a wider funding package. Since then progress has been made in developing the scheme and identifying a potential road/rail solution.
- DfT considering how the project could be delivered in stages.
- If future funding is secured it is possible that early outputs could be delivered by 2024.
- Felixstowe branchline: complete



# Great Eastern Mainline Taskforce



- Taskforce supported by the LEP
- Evidence refresh continuing: project board has considered the Strategic Outline Business Case first draft; business case accepted by Anglia Programme Board, chaired by the DfT & approved request to enter the Rail Network Enhancement Process (RNEP)
- Need approval to enable Network Rail to carry out additional work on the rail enhancements for inclusion. The business case is expected to be finalised in the Spring. It will then be subject to assurance processes before Programme Board approval.
- The refresh of the wider economic benefits study is well underway. The final version will be incorporated into the business case.
- Following Priti Patel MP's promotion to Home Secretary, Giles Watling MP has agreed to be the new Taskforce Chair.
- Haughley: funding support in principle from Suffolk Leaders to advance.

- Funding for both the western and central sections.
- Preferred route announcement for central section expected late 2019.
- Local authorities and the LEP help to boost the case for delivering improvements to the eastern section.
- An eastern section prospectus (led by SCC) has been published. It outlines how the delivery of the eastern section will promote economic growth, improve national and international connectivity and add freight capacity to the network.
- The development of an Preliminary SOBC is the next step for the Eastern Section.
- With the necessary support, the eastern section improvements could be in place during the early to mid-2020s, enabling them to be 'Central Section Ready'.







## **Completing the provision of high speed broadband/FTTP by 2025**

Strong local authority leadership – Better Broadband programmes, supported by £10m from Growth Deal

Local Full Fibre Network projects across both counties

Rural Gigabit Connectivity and ‘Outside In’ Programmes helping to boost fibre connectivity in rural areas

Norfolk and Suffolk Innovation Network, funded by Growth Deal, looking to deliver Internet of Things technology across the area

## **Strengthening the reliability of high quality mobile coverage**

Strong work by Chambers of Commerce to date

Norfolk and Suffolk County Councils have mapped mobile ‘not spots’

## Greater South East Energy Hub

Co-partner on the Local Energy East Strategy and Energy Hub Board member. Energy Hub looking at overcoming grid constraints, a range of support for development sites, smart grid solutions, renewable power generation, electrification of transport, improving the evidence base to enhance strategic development planning, supporting community-led energy through the Rural Community Energy Fund and investigating how the local tax base could drive local energy investment.

## Sector Deals

Active role in supporting both the Offshore Wind and Nuclear Sector Deals through supply chain programmes, skills initiatives and wider business support. Our new All Energy Industry Council provides cross-sector learning and builds on these Deals. Area launched offshore wind sector deal and offshore wind prospectus in Great Yarmouth and Lowestoft earlier in the year.

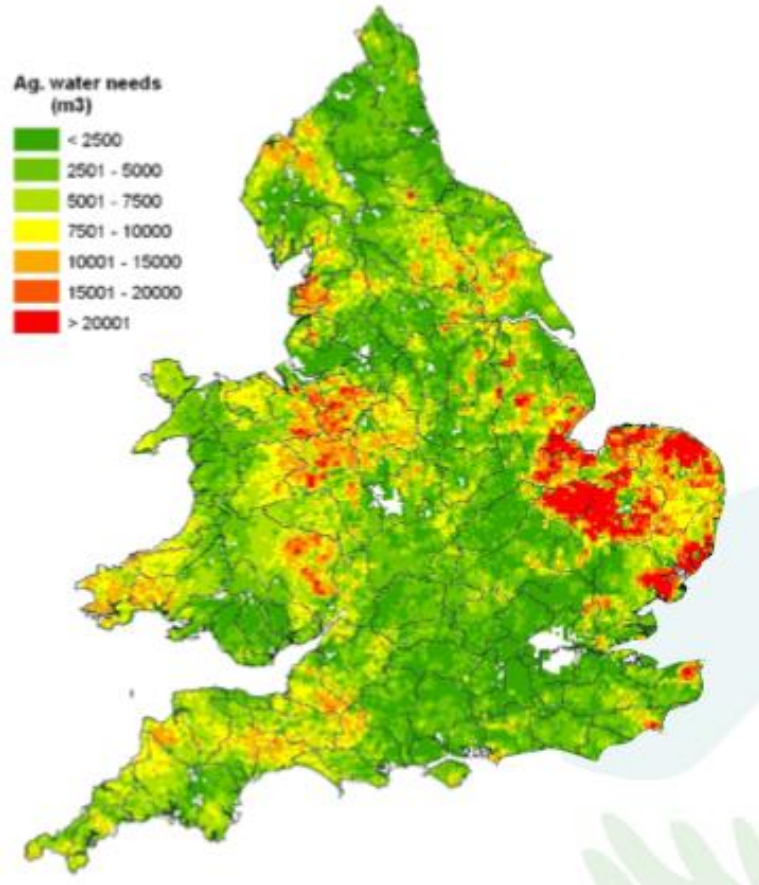
## Growth Deal

£2.65m to increase electricity supply at Snetterton Heath

## Sizewell C

Working with East Suffolk Council, Suffolk County Council, the Chamber of Commerce and EDF to proactively ensure the local economic benefits of the scheme are realised





## Water Resources East

- By 2060, the gap between the supply and demand for water in our region will be at least 750MI/d
- Public water supply, agriculture and environmental vulnerabilities combine to make the challenge greater in Norfolk and Suffolk
- Water Resources East is a multi-sector, regional scale planning solution – Norfolk County Council and Suffolk Growth Programme Board have a joint Director appointment to WRE
- WRE working in partnership with regional academic institutions
- Emerging strategy focusses on demand management, strategic transfer/import, desalinisation, new reservoir/s, groundwater abstraction, environmental net gain, innovative solutions and community engagement
- Catchment pilot schemes in progress – farm clusters and chalk stream projects in Norfolk and Suffolk



## **Flood defences that unlock or protect housing and commercial development**

Local Lead Flood Authorities and Coastal Partnership East lead

£10m in Lowestoft

£8.2m in Great Yarmouth

£6.6m in Ipswich Growing Places loan

£1.08m Bacton to Walcott

£125,000 Snape Maltings

Looking for strategic, integrated and innovative solutions moving forward



# Priority Places and Housing Infrastructure Fund



**Infrastructure improvements underpin all our priority places and themes**

## Housing Infrastructure Fund

Funding for the following schemes has been agreed by Government:

- Thetford Northern Sustainable Urban Extension: £9.95m
- Ipswich Garden Suburb: £9.9m
- Norwich Anglia Square: £12.2m
- A11 Cringleford: £5.5m

Other forward funding projects are being advanced in both Norfolk and Suffolk

**2019**

RIS2 decision  
New train rollout  
Norwich in 90/Ipswich in 60  
4x a day

**2021**

OBC for Ely area  
Growth Deal projects  
complete  
Thickthorn junction begun  
Energy Hub financially  
sustainable

**2023**

Great Yarmouth crossing  
open  
Transforming Cities complete  
\*



**2020**

98% superfast broadband  
coverage in Suffolk, more  
than 95% in Norfolk  
Sizewell planning begun  
SOBC for Ely area  
SOBC for GEML  
WRE regional plan produced

**2022**

Blofield to Burlingham and  
North Tuddenham to Easton  
dualling begun  
Lake Lothing crossing open  
Norwich Western Link begun \*  
Long Stratton Bypass begun

**Mid 2020s**

FTTP delivered \*  
East West Rail delivered\*  
Early Ely road/rail  
improvements delivered\*  
RIS2 projects delivered\*  
East Anglia franchise renew  
Ipswich Northern route \*  
and Barnby Bends start

\*subject to preferred options and funding  
decisions