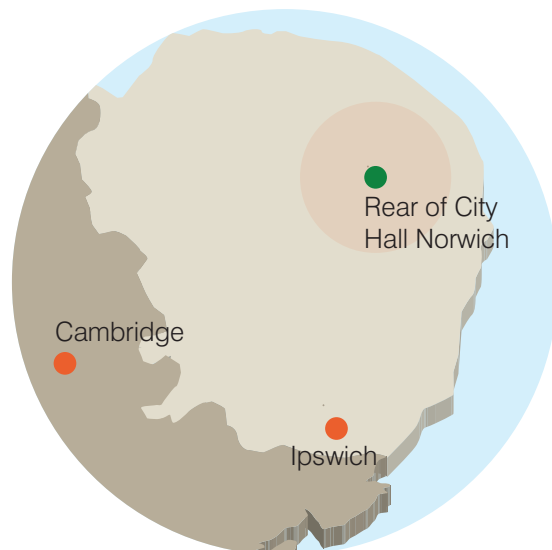


REAR OF NORWICH CITY HALL REDEVELOPMENT



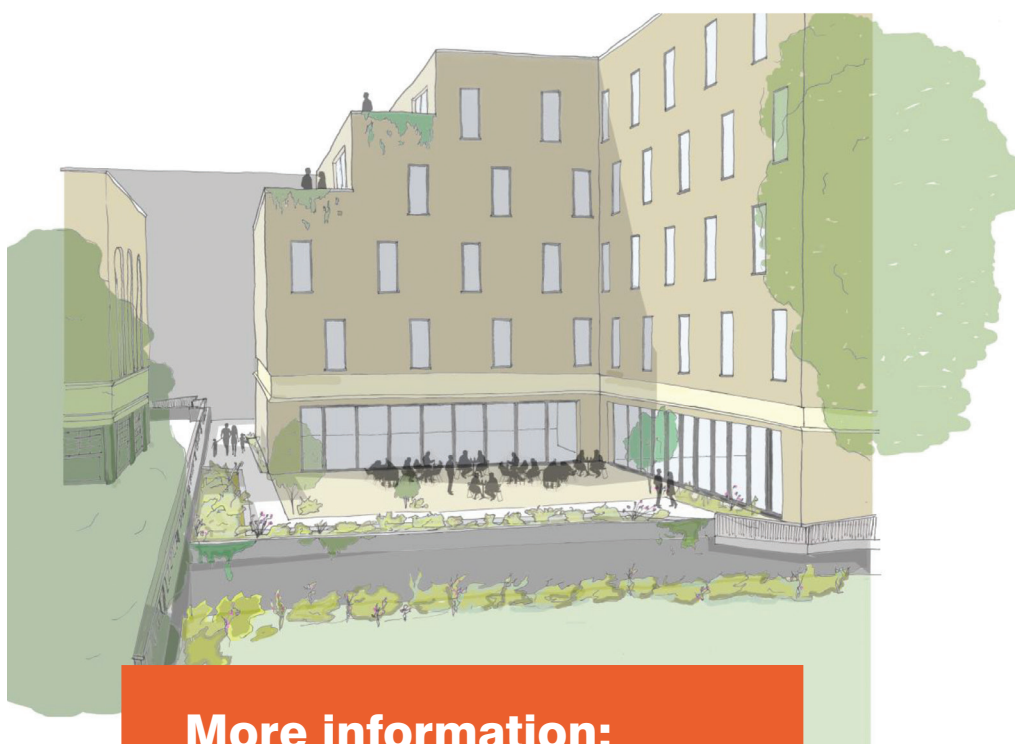
Overview

The site is adjacent to city hall in the centre of Norwich, close to the main retail core and two off-street car parks. A variety of cultural facilities are also close by and accessibility is very good with excellent links to the railway.

The project is at Phase 2, where options are being considered and a scheme comprising either a Hotel or Office scheme is being considered as illustrated below.

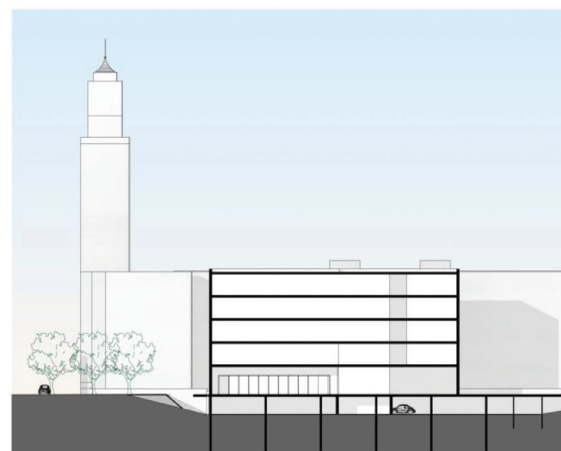
Opportunity

The site offers either office or hotel development with some retail and offers access from St Giles Street for both vehicular and pedestrian access. The Council is looking for partners (subject to procurement) to deliver a viable scheme by way of Joint Venture.



More information:

Dave Moorcroft,
Tel: 01603 212 225
Email: davemoorcroft@norwich.gov.uk



Section 1. North to South



Section 2. East to West

Exterior Space